



# THE OTAVA

**2025 PRICING PROPOSAL**

PREPARED FOR: **CLIENT NAME**

PLUS  
PUU<sup>®</sup>  
CANADA

PLUSPUUHOMES.CA



# OTAVA

The modern and stylish Otava is designed with simplicity & functionality in mind. The spacious and airy great room allows for breathtaking views and ample natural light.

## BASE MODEL DETAILS

Floorplan Variation:

112

Total Area:

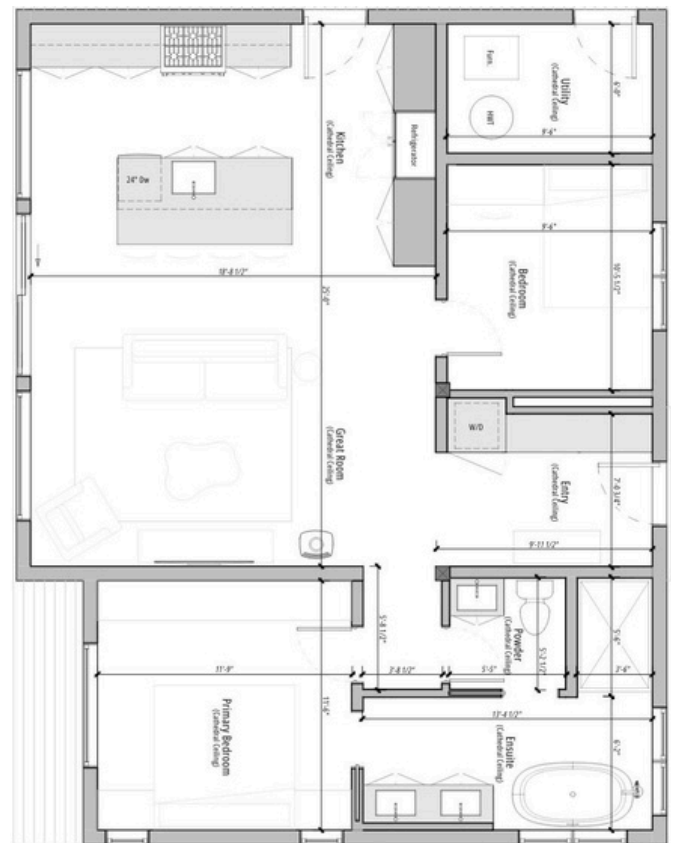
1120 SQ FT

Number of Bedrooms:

2

Number of Baths:

1



# THE OTAVA PACKAGE PRICING

✓ INCLUDED
⊕ OPTIONAL ADD-ON

SHELL PACKAGE	MATERIAL & SERVICE DETAILS	WT
<b>Foundation</b>	Footings, Slab on Grade, Insulation, & Drainage	✓
<b>Design &amp; Planning</b>	Architectural Design, Building Blueprints & Project Management	✓
<b>Log &amp; Timber Kit</b>	Logs, Posts & Beams, Floor System, Interior Walls,	✓
<b>Weathertight Kit</b>	Metal Roof, PVC Window & Door Package, Pressure Treated Decking w/ Foundation, Interior/Exterior Staining	✓
<b>Labour to Assemble</b>	Labour to Build & Incidentals	✓

<b>SHELL TOTAL (PRE-TAX):</b>	<b>\$458,000 CAD</b>
-------------------------------	----------------------

TURNKEY PACKAGE	MATERIAL & SERVICE ADD-ONS	TK
<b>Mechanical, Electrical &amp; Plumbing + Labour</b>	<i>ERV/HRV, 200 Amp Electrical Package, Plumbing System &amp; Labour to Assemble</i>	⊕
<b>Finishing Kit + Labour</b>	<i>Drywall Finishing, Flooring [LVP], Trim, Stairs, T+G, Interior/Exterior Staining, Builder Grade Cabinets, Laminate Counters, Vanities, Toilets, Tub &amp; Shower Kits + Labour</i>	⊕

<b>TURNKEY TOTAL (PRE-TAX):</b>	<b>\$707,000 CAD</b>
---------------------------------	----------------------

WT - WEATHERTIGHT TK - TURNKEY

TERMS & CONDITIONS APPLY.