



THE NAUVO+

2025 PRICING PROPOSAL

PREPARED FOR: **CLIENT NAME**

PLUS
PUU®

CANADA

PLUSPUUHOMES.CA



NAUVO+

Nauvo is a modern chalet with a classic monopitch roof that offers stunning 360 degree views of its surroundings from the rooftop deck.

BASE MODEL DETAILS

Floorplan Variation:

125+

Total Area:

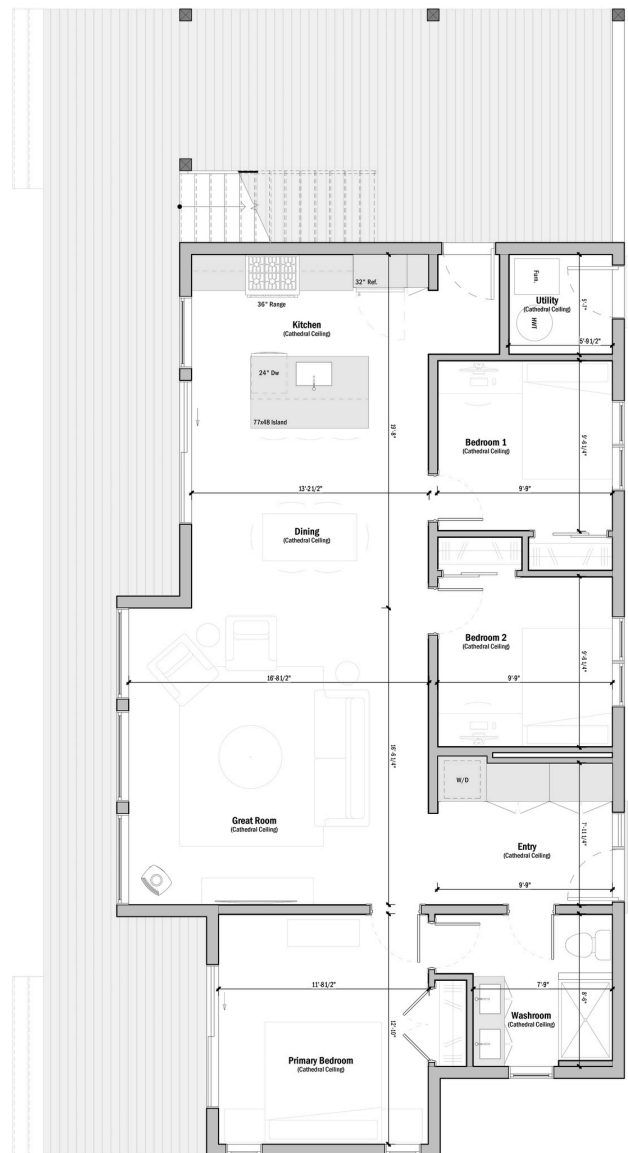
1257 SQ FT

Number of Bedrooms:

3

Number of Baths:

1



THE NAUVO+ PACKAGE PRICING

✓ INCLUDED
⊕ OPTIONAL ADD-ON

SHELL PACKAGE	MATERIAL & SERVICE DETAILS	WT
Foundation	Footings, Slab on Grade, Insulation, & Drainage	✓
Design & Planning	Architectural Design, Building Blueprints & Project Management	✓
Log & Timber Kit	Logs, Posts & Beams, Floor System, Interior Walls,	✓
Weathertight Kit	Metal Roof, PVC Window & Door Package, Pressure Treated Decking w/ Foundation, Interior/Exterior Staining	✓
Labour to Assemble	Labour to Build & Incidentals	✓

SHELL TOTAL (PRE-TAX):	\$488,800 CAD
-------------------------------	----------------------

TURNKEY PACKAGE	MATERIAL & SERVICE ADD-ONS	TK
Mechanical, Electrical & Plumbing + Labour	<i>ERV/HRV, 200 Amp Electrical Package, Plumbing System & Labour to Assemble</i>	⊕
Finishing Kit + Labour	<i>Drywall Finishing, Flooring [LVP], Trim, Stairs, T+G, Interior/Exterior Staining, Builder Grade Cabinets, Laminate Counters, Vanities, Toilets, Tub & Shower Kits + Labour</i>	⊕

TURNKEY TOTAL (PRE-TAX):	\$723,000 CAD
---------------------------------	----------------------

WT - WEATHERTIGHT TK - TURNKEY

TERMS & CONDITIONS APPLY.