



PLUSPUU HOMES CANADA

INIÖ 150

PRICING PROPOSAL



PREPARED FOR:

CLIENT

DATE OF ESTIMATE:

JULY 2023

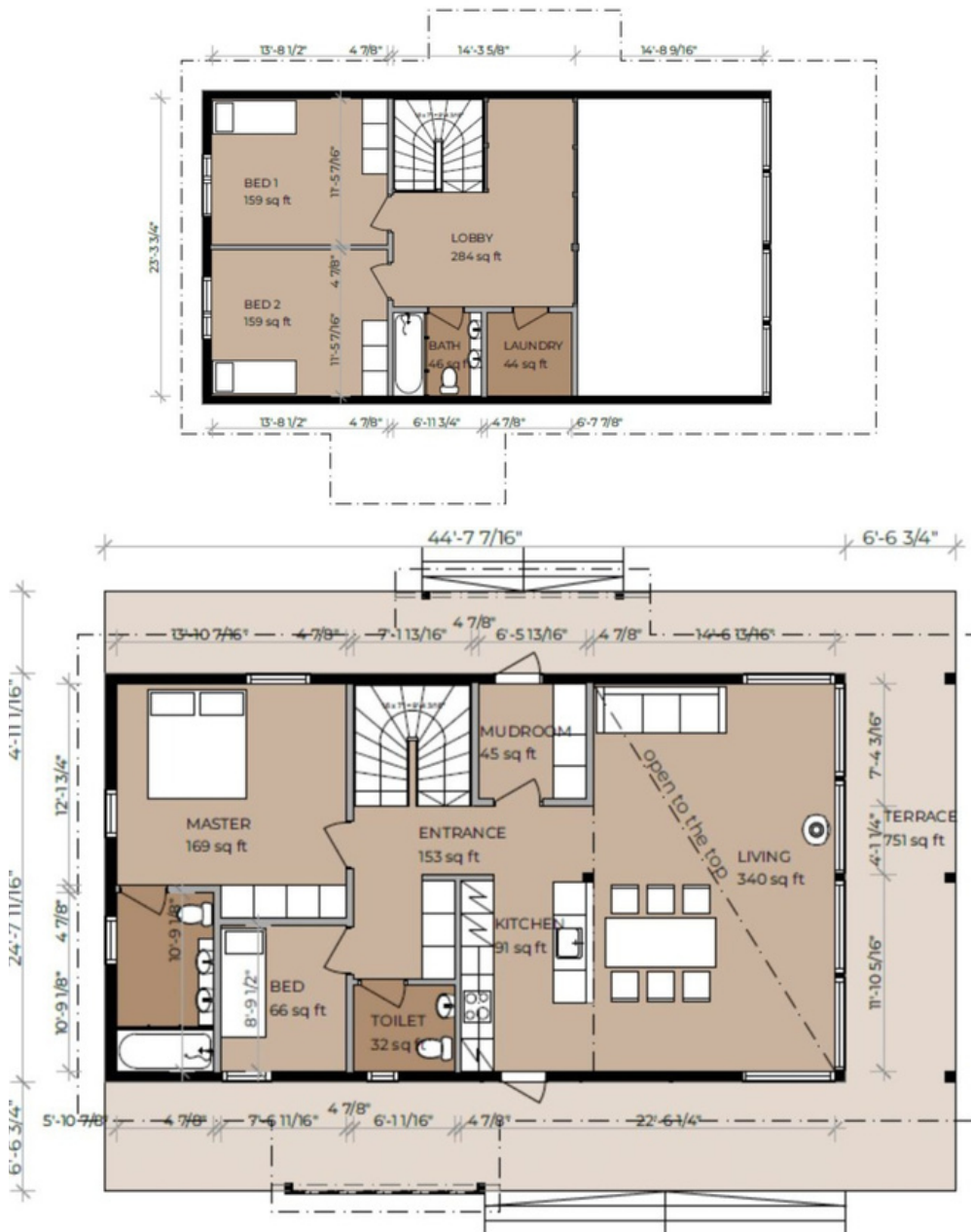
PLUSPUUHOMES.CA

INIÖ 150

BASE MODEL DETAILS

Iniö 150 - 3 bedroom/ 2.5 bath

1099 + 458 SQ FT Finished +
751 SQ FT Terrace



INITIAL ESTIMATE

INIÖ 150 - BASE MODEL

<i>PLANNING & DESIGN</i>
Discovery Services & Conceptual Drawings (3 Iterations)
Pre-Construction Services - Pluspuu to design and coordinate all site and permitting activities required to build, including; surveys, site work, utility servicing, well, septic & foundation
<i>LOG & TIMBER/WEATHERTIGHT KITS (Assembled on-site)</i>
Log & Timber Kit - Includes engineered logs, posts, beams, roof framing, deck & interior wall framing materials
Weather Tight Kit - Includes windows, exterior doors, metal roofing system & roof insulation
Assembly & Installation of Kits
General Conditions - Site insurance, equipment rentals, incidentals

ESTIMATE TOTAL PRE-HST: **\$396,000**

TERMS & CONDITIONS:

Estimate only. Final quote provided with Sales Contract following client discussions. Design & management fees based on site conditions and level of customization. Additional costs may be incurred for necessary site work.

OTHER VARIABLE COSTS

DIY - You contract and source all the materials to finish the project

OR

Turnkey - Engage Pluspuu preferred contractor(s) to complete

**PROJECTED FOR
1300 SQ FT**

<u>Variable Project Requirements</u>	<u>Assumptions & Allowances</u>
Foundation (Slab)	4ft Frost wall. Slab on grade
Heating Systems (EVR/Mini Splits)	Air Exchanger + Mini Split
Electrical (Rough In + Finishing)	Rough In + Finishing at 200 AMP
Plumbing (Roug In + Finishing)	Rough in + Finishing
Kitchen Cabinets	\$700/LFT
Flooring	\$11/SQ FT
Bathrooms (Fixtures + Finishings)	\$9000/Per Bath
Interior Doors, Trim & Drywall	Materials + Labour
GC & Project Management	Project Management Fees For Items Above

STARTING AT: \$250,000