



THE INIÖ

2025 PRICING PROPOSAL

PLUSPUU HOMES CANADA

PLUS
PUU®
CANADA

PLUSPUUHOMES.CA



INIÖ

Large floor-to-ceiling windows in the living room and dining create a dramatic effect and offer a splendid view of nature with tons of natural light.

BASE MODEL DETAILS

Floorplan Variation:

Iniö

Total Area:

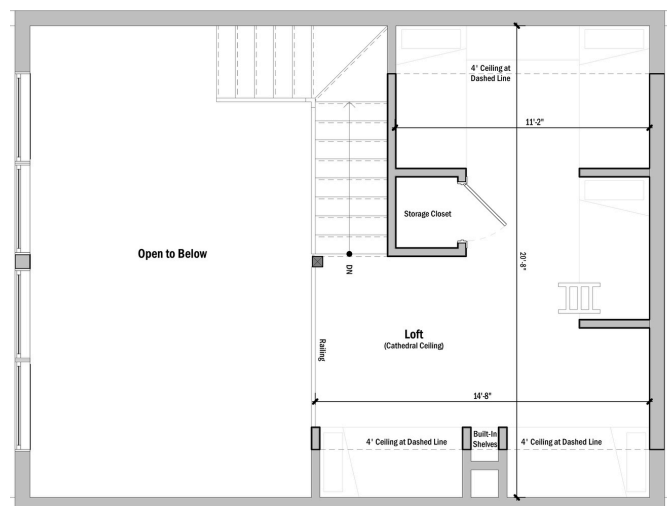
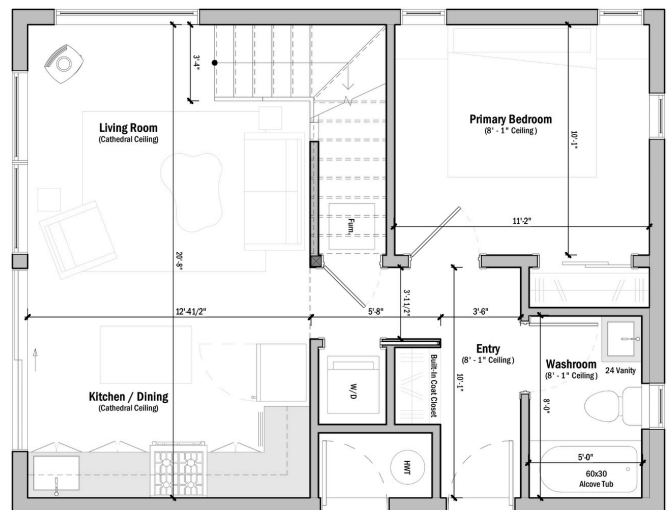
935 SQ FT

Number of Bedrooms:

2

Number of Baths:

1



THE INIÖ PACKAGE PRICING



INCLUDED
 OPTIONAL ADD-ON

SHELL PACKAGE	MATERIAL & SERVICE DETAILS	WT
Foundation	Footings, Slab on Grade, Insulation, & Drainage	
Design & Planning	Architectural Design, Building Blueprints & Project Management	
Log & Timber Kit	Logs, Posts & Beams, Floor System, Interior Walls,	
Weathertight Kit	Metal Roof, PVC Window & Door Package, Pressure Treated Decking w/ Foundation, Interior/Exterior Staining	
Labour to Assemble	Labour to Build & Incidentals	

SHELL TOTAL (PRE-TAX):	\$360,000 CAD
------------------------	----------------------

TURNKEY PACKAGE	MATERIAL & SERVICE ADD-ONS	TK
Mechanical, Electrical & Plumbing + Labour	ERV/HRV, 200 Amp Electrical Package, Plumbing System & Labour to Assemble	
Finishing Kit + Labour	Drywall Finishing, Flooring [LVP], Trim, Stairs, T+G, Interior/Exterior Staining, Builder Grade Cabinets, Laminate Counters, Vanities, Toilets, Tub & Shower Kits + Labour	

TURNKEY TOTAL (PRE-TAX):	\$557,000 CAD
--------------------------	----------------------

WT - WEATHERTIGHT TK - TURNKEY

TERMS & CONDITIONS APPLY.