



THE JURMO+

2025 PRICING PROPOSAL

PLUSPUU HOMES CANADA

PLUS
PUU®

CANADA

PLUSPUUHOMES.CA



JURMO+

The clean-lined Jurmo is a prime example of no-frills Scandinavian elegance. Excellent spatial design combined with large windows and terraces make the surroundings an integral part of the interior.

BASE MODEL DETAILS

Floorplan Variation:

75+

Total Area:

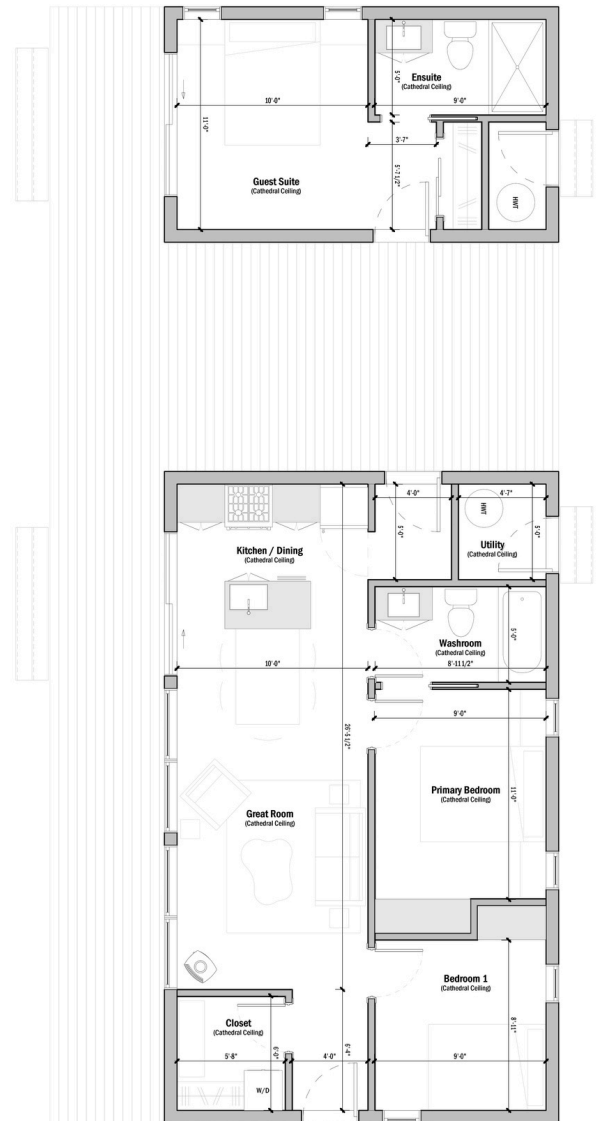
960 SQ FT

Number of Bedrooms:

3



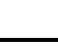
Number of Baths:

2


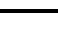


THE JURMO+ PACKAGE PRICING

 INCLUDED
  OPTIONAL ADD-ON

SHELL PACKAGE	MATERIAL & SERVICE DETAILS	WT
Foundation	Footings, Slab on Grade, Insulation, & Drainage	
Design & Planning	Architectural Design, Building Blueprints & Project Management	
Log & Timber Kit	Logs, Posts & Beams, Floor System, Interior Walls,	
Weathertight Kit	Metal Roof, PVC Window & Door Package, Pressure Treated Decking w/ Foundation, Interior/Exterior Staining	
Labour to Assemble	Labour to Build & Incidentals	

SHELL TOTAL (PRE-TAX):	\$431,700 CAD
-------------------------------	----------------------

TURNKEY PACKAGE	MATERIAL & SERVICE ADD-ONS	TK
Mechanical, Electrical & Plumbing + Labour	<i>ERV/HRV, 200 Amp Electrical Package, Plumbing System & Labour to Assemble</i>	
Finishing Kit + Labour	<i>Drywall Finishing, Flooring [LVP], Trim, Stairs, T+G, Interior/Exterior Staining, Builder Grade Cabinets, Laminate Counters, Vanities, Toilets, Tub & Shower Kits + Labour</i>	

TURNKEY TOTAL (PRE-TAX):	\$655,000 CAD
---------------------------------	----------------------

WT - WEATHERTIGHT TK - TURNKEY

TERMS & CONDITIONS APPLY.